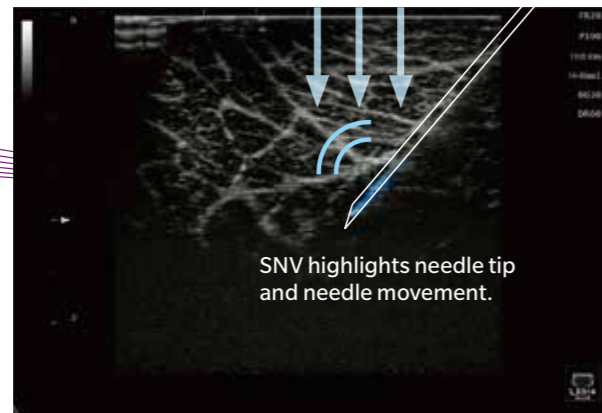


## Wide Viewing Angle Monitor



## SNV (Simple Needle Visualization)

HS2 provides greater visibility of the needle tip and shaft. SNV supports both in-plane and out-of-plane approaches.

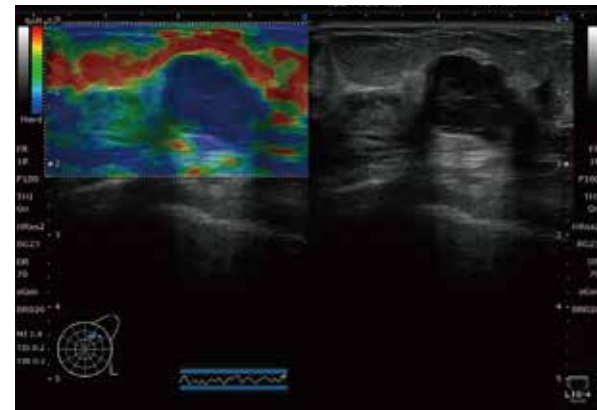


### Available Probe for SNV

L18-4 C5-2  
L11-3 MC10-3  
L14-4 WL13-3  
HL18-4

## Strain Elastography

HS2 provides advanced real-time qualitative imaging method displaying the relative stiffness of tissues.



## Shared Library Function

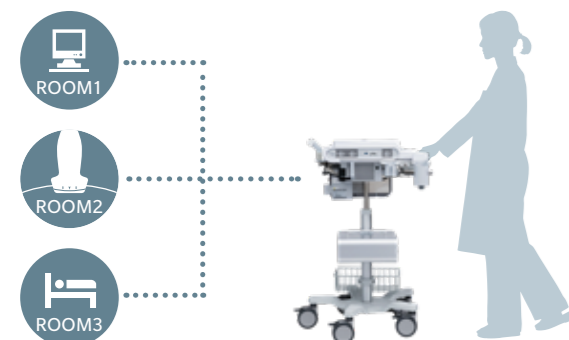
You can save the still images and videos taken by ultrasound system in the shared folder of the PC and refer to the data in the shared folder with another ultrasound system (SONIMAGE series supports this function) or tablets. When used in combination with Camera, it can also share camera images and audio information, making it new information sharing tool that connects doctors and Healthcare Professionals.



\*Separate PC and tablet are required.

## Cableless Solution by Installed Battery

Battery is installed inside the system. That allows the HS2 to move around without shutting down the main unit. It makes the workflow easier and able to set up quickly in the perioperative, and all other facilities in the hospital/clinic.



## Probe Options



C5-2  
Convex Probe



L18-4  
High Frequency Linear Probe



L11-3  
Linear Probe



L14-4  
Linear Probe



WL13-3  
Wide Linear Probe



S4-2  
Sector Probe



S4-2A  
Sector Probe



MC10-3  
Micro Convex Probe



HL18-4  
Linear Probe



EC9-3  
Endocavity Probe

## Optional Equipment and Features



◆ Three-Port Probe Unit  
◆ Pole Cart



◆ Keyboard



◆ Foot Switch (Triple/Dual)

- ◆ Cable Hanger
- ◆ CW-Mode
- ◆ Strain Elastography
- ◆ Panoramic View
- ◆ SNV(Simple Needle Visualization)
- ◆ Auto IMT
- ◆ Image Library
- ◆ Voice Control & Voice Control Microphone
- ◆ Direct recording to external media
- ◆ Camera Function & Camera equipment
- ◆ Shared Library Function

## Main Body

Scan Method	Convex, Linear, Sector
Operating Mode	B, M, Color, Power, SCF, PW, CW*1, TDI, Strain Elastography*2
Monitor	15 inch
Size	W369 mm x D452 mm x H90 mm (when folding the monitor)
Power Input	AC 100-240 V, 50/60 Hz, Max.180 VA
Weight	Approx. 7.9 kg (battery included)

◆ Option : \*1 CW, \*2 Strain Elastography



KONICA MINOLTA

Diagnostic Ultrasound System

# SONIMAGE HS2



Giving Shape to Ideas

KONICA MINOLTA, INC.

Website: <https://www.konicaminolta.com/>

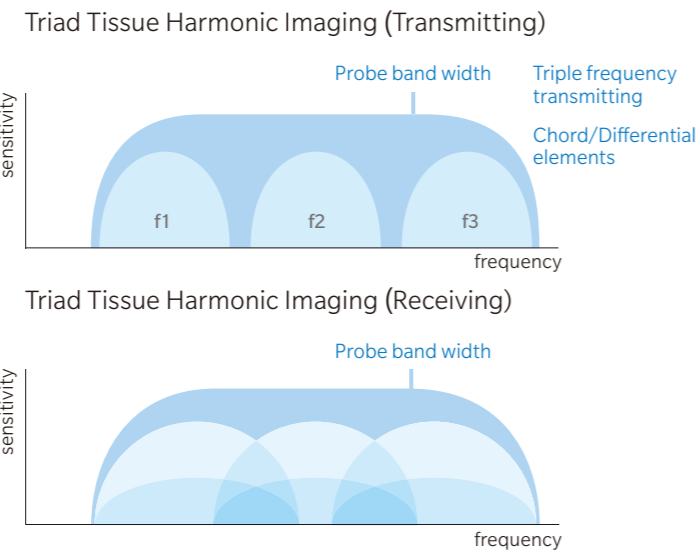
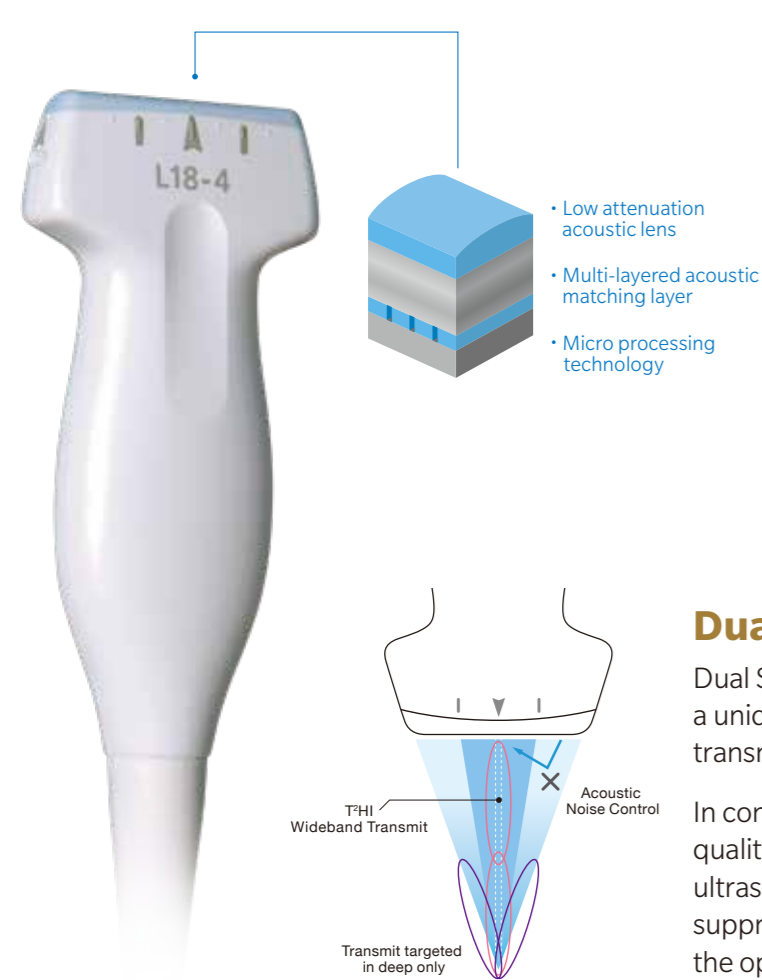
HS2\_ENG\_202203\_A



# Superior Image Quality

## Advanced Technology for Superior Image

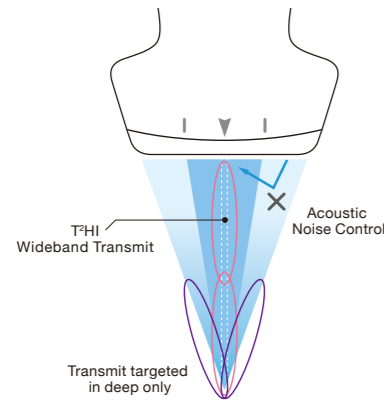
Konica Minolta's advanced technology features allow improved image detail and contrast resolution that provide precision diagnosis and better patient outcomes. High frequency linear probe "L18-4" provides exceptional image quality with an advanced level of Tissue Harmonic "T<sup>2</sup>HI", and it is particularly ideal for superficial imaging.



## Dual Sonic Technology

Dual Sonic, Konica Minolta's proprietary technology, uses a unique transmitting algorithm which enables it to transmit two waveforms depending on the focus depth.

In combination with T<sup>2</sup>HI technology, formation of high quality of THI signal is focused around the center of ultrasound beam in receiving area. As a result, it enables suppression of acoustic noise and to ensure the optimum image from deep to superficial structures.



## iXRET

HS2 achieves higher resolution and faster frame rates by utilizing Konica Minolta's unique technology "iXRET".



## Simple Clear Flow

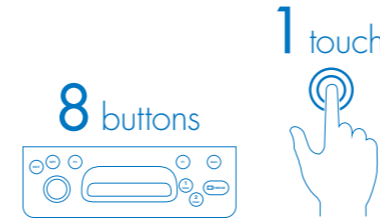
This feature clearly detects small vessels.



# Easy to Use

## Efficient Workflow for Daily Clinical Practice

HS2 delivers intuitive workflow by customizing 8 physical buttons and touch panel.



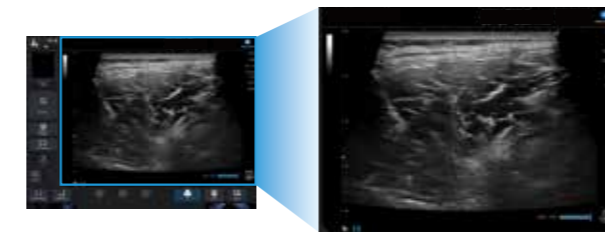
## Intuitive Icon Display

It enables selection of probes and applications on the preset shortcut screen. Up to 12 icons can be shown.



## Drawing Feature

HS2 offers a unique function to write, draw lines, figures etc. by using fingers on the screen. This is an excellent tool for training and communicating with patients.



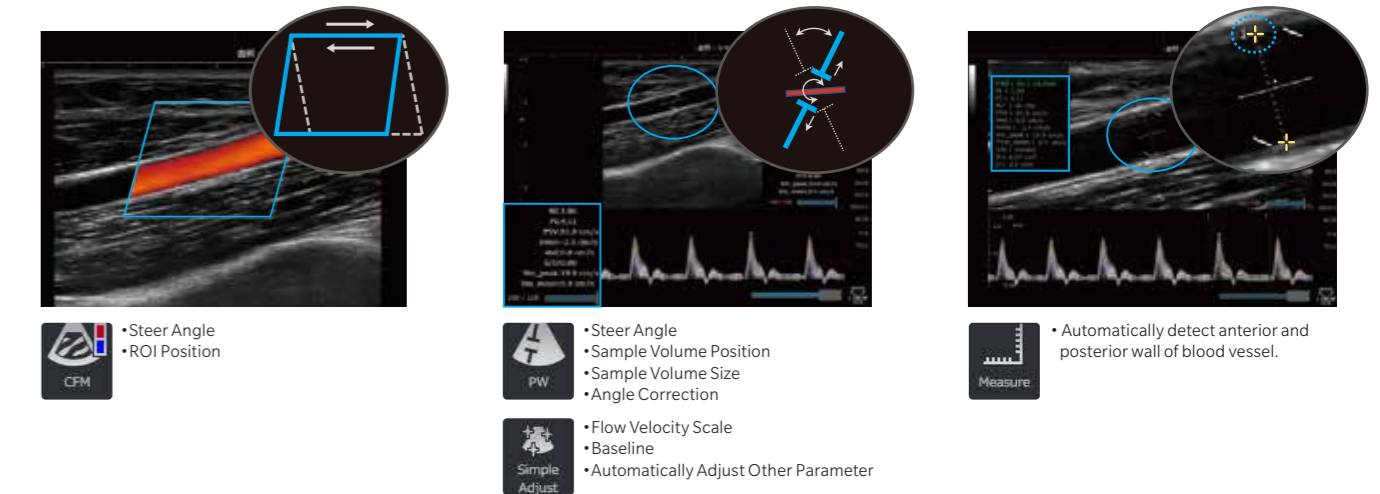
## Full Screen Display

This feature maximizes the screen space. The images look bigger and closer.



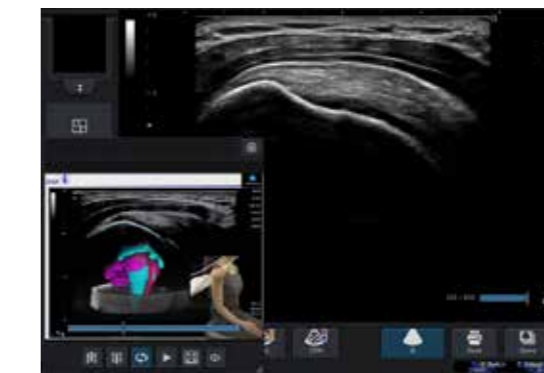
## Vascular NAVI

Vascular NAVI automatically adjusts ROI, doppler cursor position, gate size, angle correction and steering angle. This function supports easy blood workflow and blood flow volume measurements.



## Image Library

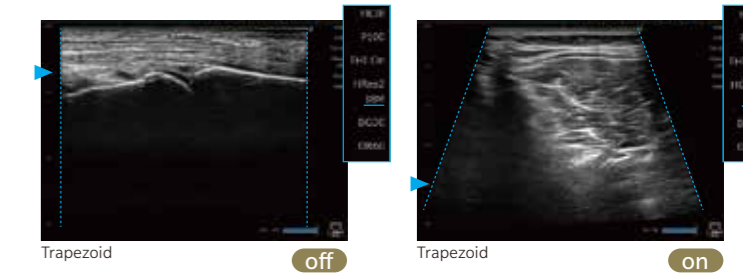
HS2 can play movie clips and images saved on the system and SD cards to learn from expert's procedures to improve skills.



\*The image is for illustrative purposes only.

## MPA (Multi Parameter Adjuster)

MPA enables to change multiple image parameters like frequency change and turning trapezoid on in conjunction with depth change.



## Auto IMT

HS2 provides an automated real-time measurement of the intima-media thickness (IMT).



## Camera Function

Simultaneously displays ultrasonic image and images from the camera. The displayed image can be recorded as a still image, a video clip and also as an audio clip. It is convenient for checking the examination status later, or explaining it to others.

